

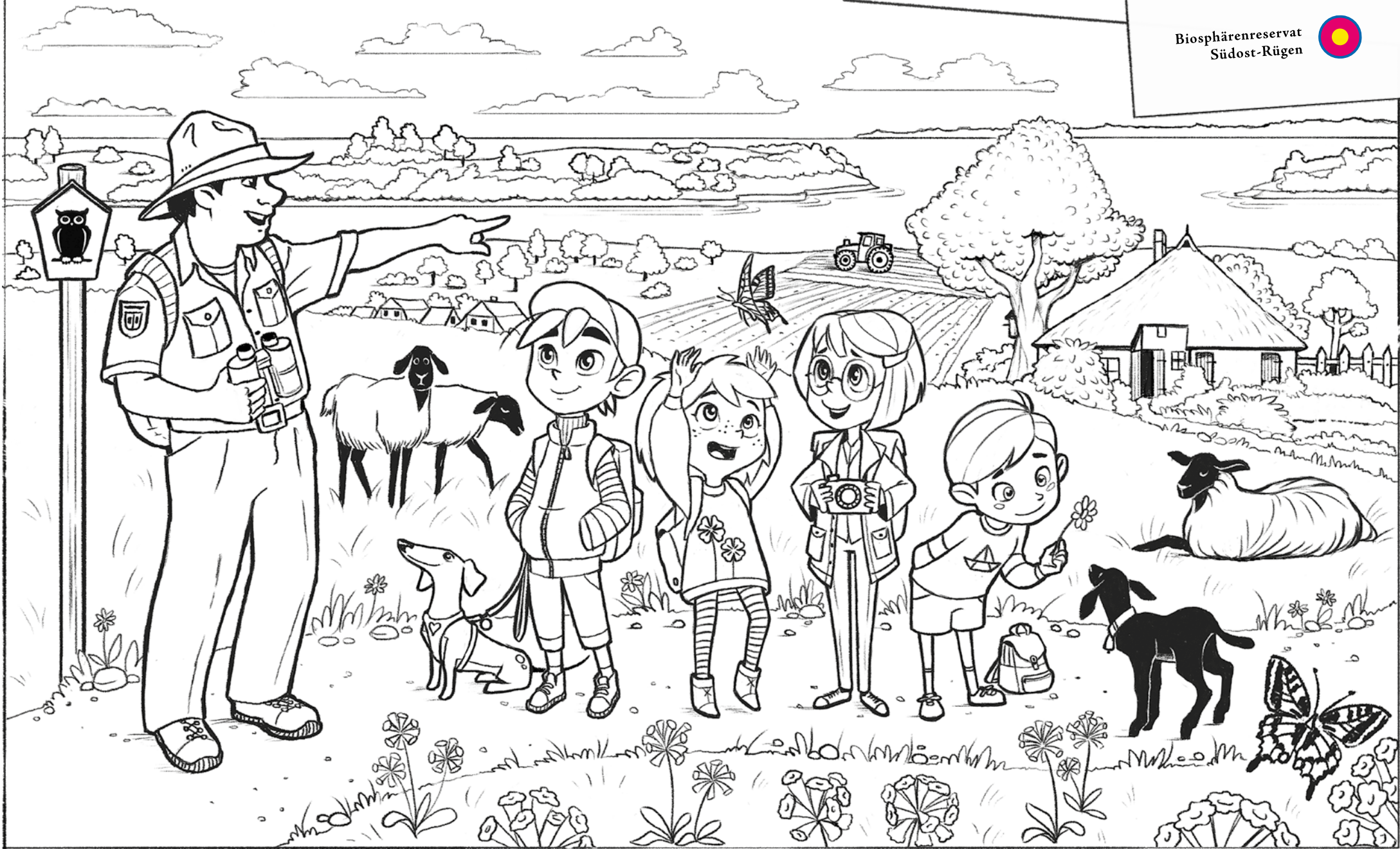
Old town stroll through the UNESCO World Heritage and Hanseatic City of Stralsund

Hansestadt
Stralsund
TOURISMUSZENTRALE



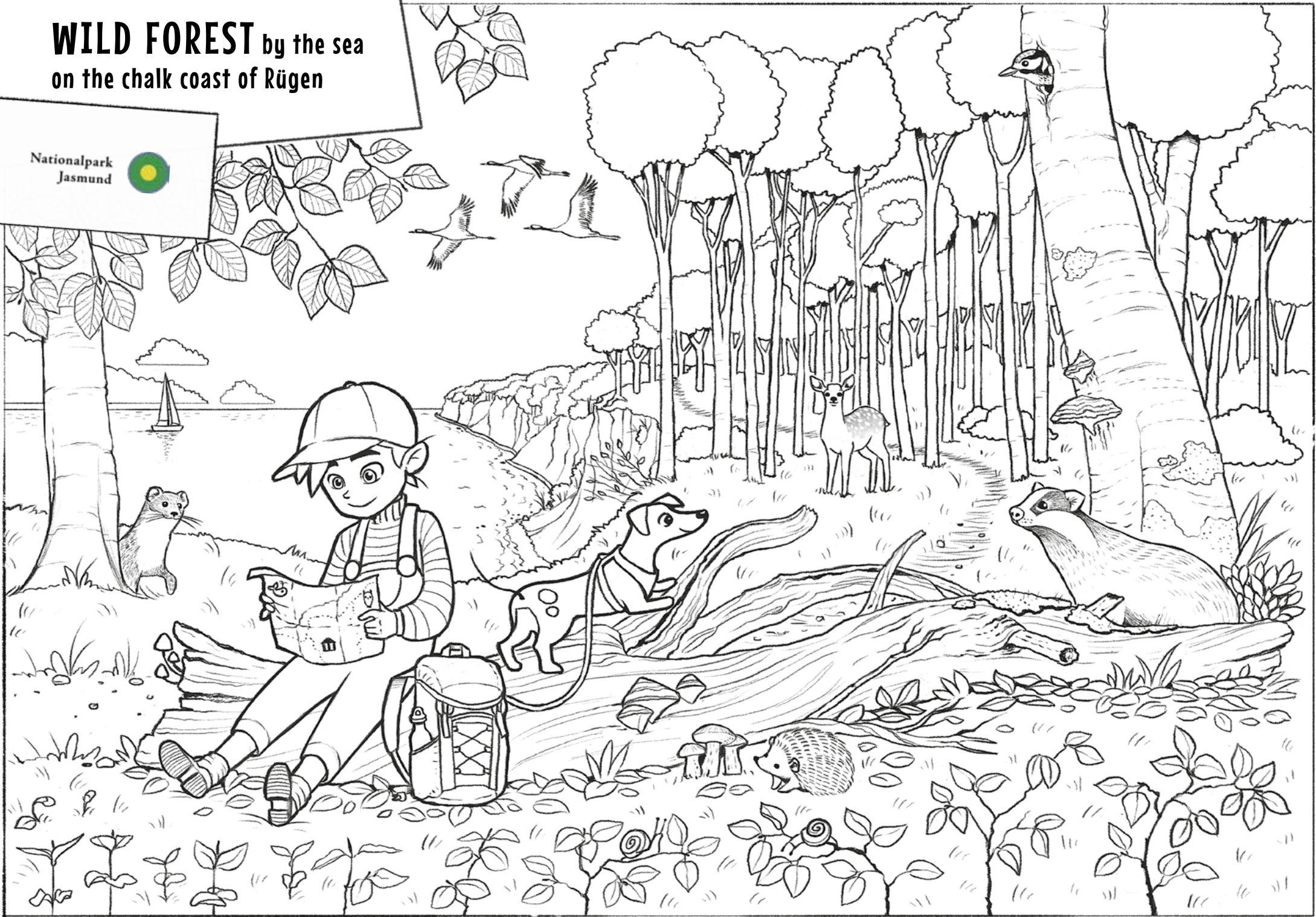
HIKING TOUR with RANGER in the UNESCO Biosphere Reserve South-East Rügen

Biosphärenreservat
Südost-Rügen



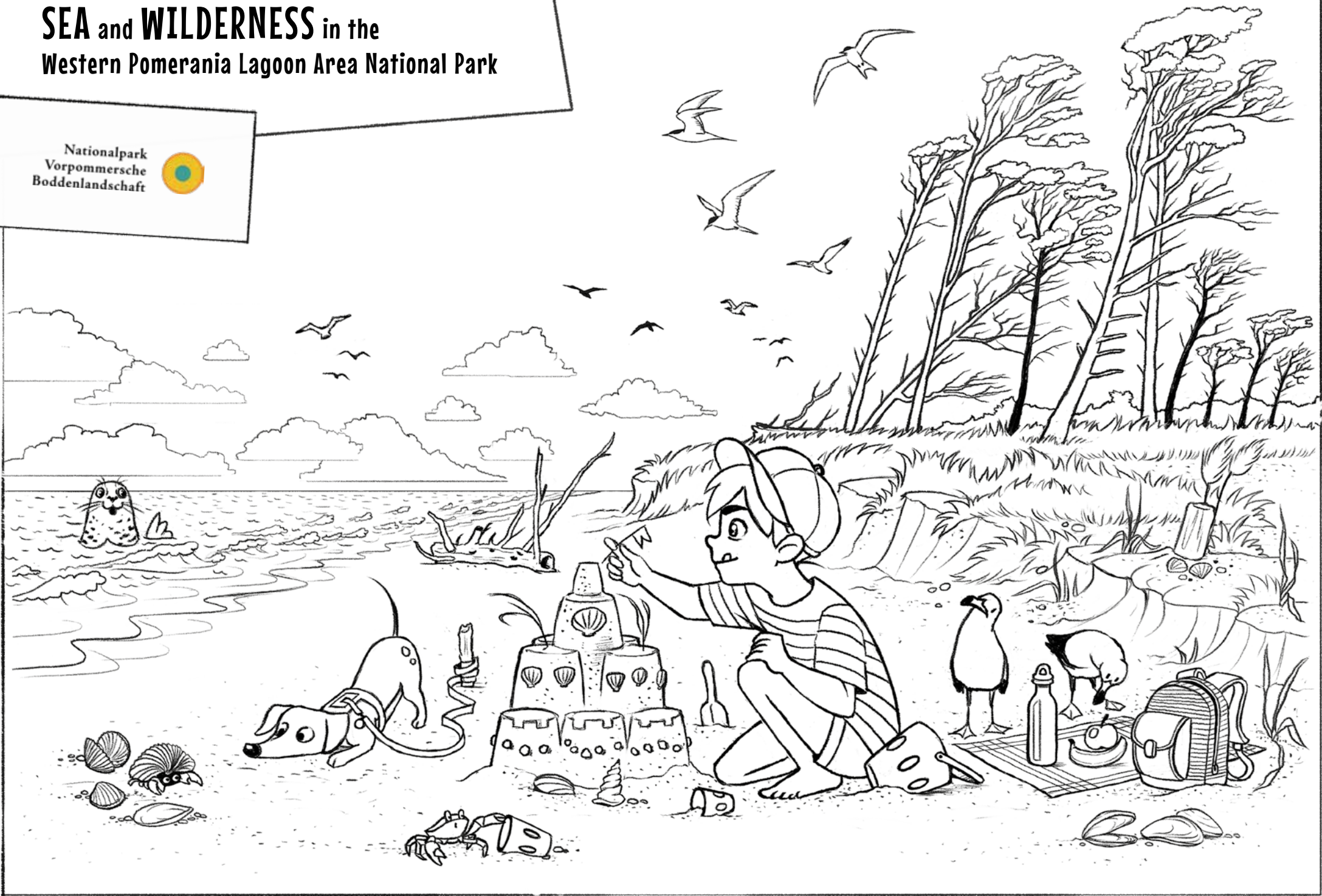
WILD FOREST by the sea on the chalk coast of Rügen

Nationalpark
Jasmund



SEA and WILDERNESS in the Western Pomerania Lagoon Area National Park

Nationalpark
Vorpommersche
Boddenlandschaft



Going on a **Hiking Tour** in the
Agricultural Landscape of Southern Öland.



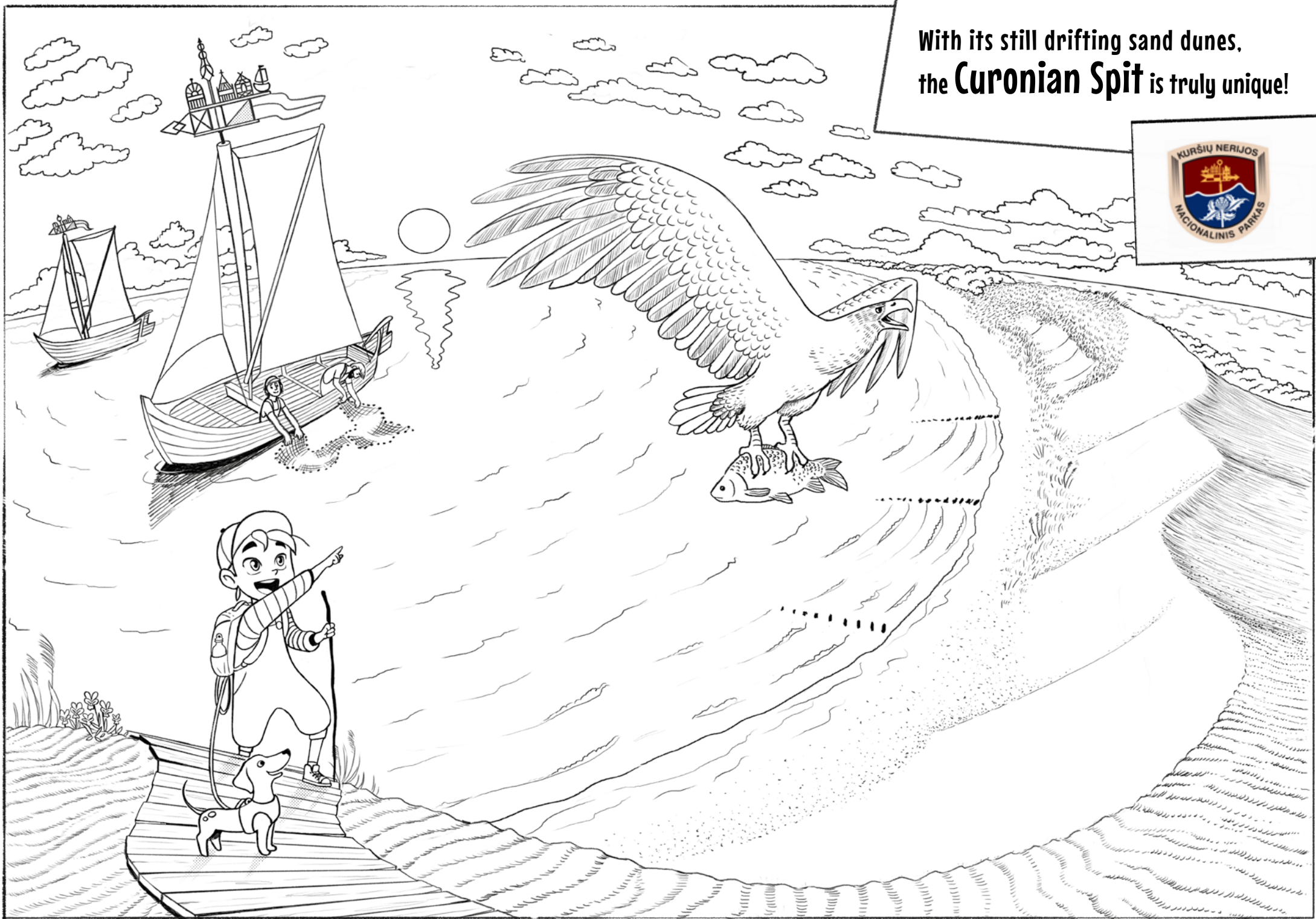
Wismar

Old Harbor with "Wisseмара"

HANSESTADT
wismar
WIRTSCHAFT · WISSENSCHAFT
WELTERBE und MEER



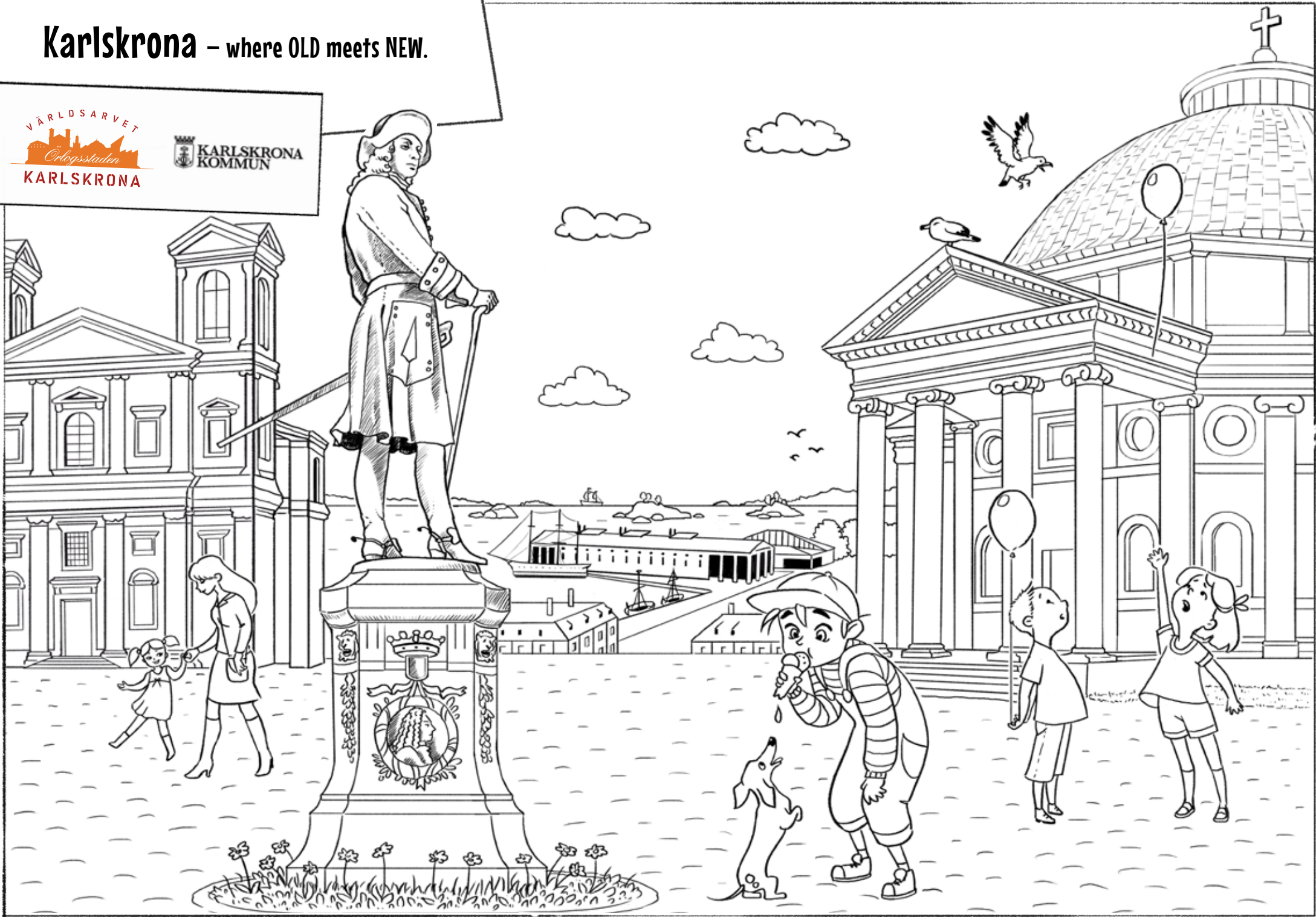
With its still drifting sand dunes,
the **Curonian Spit** is truly unique!



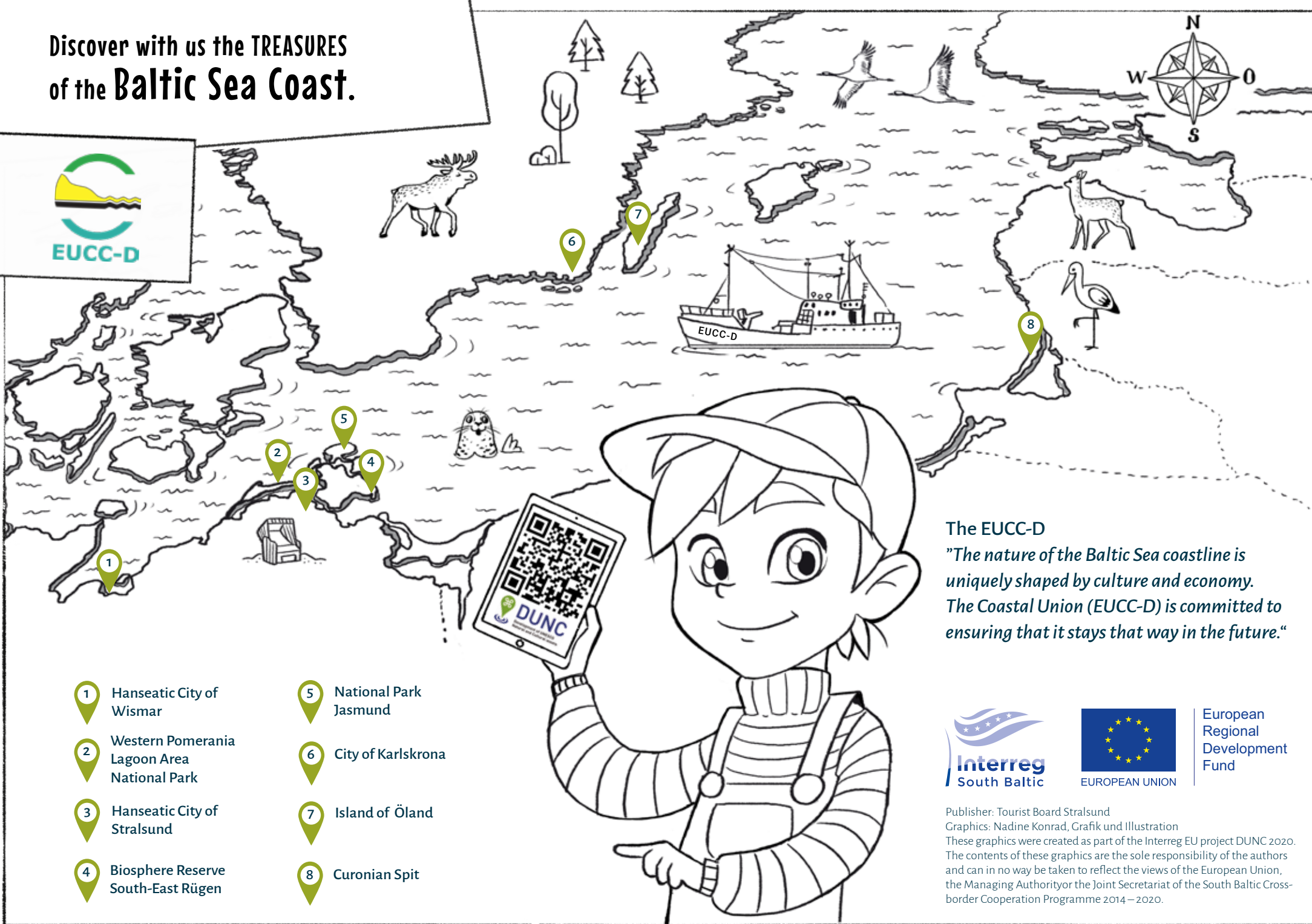
Karlskrona – where OLD meets NEW.

VÄRLDSARVET
Ölogsstaden
KARLSKRONA

KARLSKRONA
KOMMUN



Discover with us the TREASURES of the Baltic Sea Coast.



- | | |
|---|-------------------------|
| 1 Hanseatic City of Wismar | 5 National Park Jasmund |
| 2 Western Pomerania Lagoon Area National Park | 6 City of Karlskrona |
| 3 Hanseatic City of Stralsund | 7 Island of Öland |
| 4 Biosphere Reserve South-East Rügen | 8 Curonian Spit |

The EUCC-D

"The nature of the Baltic Sea coastline is uniquely shaped by culture and economy. The Coastal Union (EUCC-D) is committed to ensuring that it stays that way in the future."



European
Regional
Development
Fund

Publisher: Tourist Board Stralsund
Graphics: Nadine Konrad, Grafik und Illustration
These graphics were created as part of the Interreg EU project DUNC 2020. The contents of these graphics are the sole responsibility of the authors and can in no way be taken to reflect the views of the European Union, the Managing Authority or the Joint Secretariat of the South Baltic Cross-border Cooperation Programme 2014 – 2020.