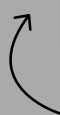


ELI'S ADVENTURES

IN KARLSKRONA

Puzzle book!





DRAW A SELF-PORTRAIT
OR PLACE A PHOTO HERE

WHO ARE YOU?

NAME:

AGE:

ADDRESS:

INTERESTS:

FAVORITE FOOD:

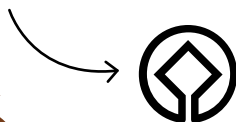
FAVORITE ANIMAL:

FAVORITE PERSON:

BEST ARTIST:

WELCOME TO KARLSKRONA!

Here you will find a lot to discover and explore. Eli will take you on an adventure journey through the history of Karlskrona, where you get to visit interesting places and experience exciting stories. Solve Eli's tricky puzzles and learn more about how life was in the past from the old man Rosenbom. You will visit many unique places and buildings. The city is so unique that it has been appointed a World Heritage site. It means that some of the things you can see and visit only exist here – in the whole world! It is important that we help each other to take care of and protect the world's natural and cultural heritages and our beautiful World Heritage site. You can see which places that are part of Karlskrona's World Heritage site by looking for this symbol in the puzzle book.



HELLO! MY NAME IS ELI.
NICE TO MEET YOU!

CONTENTS

TROSSÖ	4
WÄMÖ	7
STUMHOLMEN	8
ASPÖ	10
TJURKÖ AND STURKÖ	11
RÖDEBY AND SKÄRVA	12
LYCKEBY	13
KRISTIANOPEL	14
THE KARLSKRONA- CROSSWORD PUZZLE	15
ANSWERS	15

Production: Infab Kommunikation AB

Project Manager: Elin Malmhult

Graphic design and illustration: Karin Weandin

Copywriter: Sarah Bruze

TROSSÖ

THE FREDRIK CHURCH



The Fredrik Church was opened in **1744** and got its name after King Fredrik I. It took 20 years to build the church and another 14 years before the two towers were completed!



HERE'S SOME FISH!

The Fisherman's wife statue reminds us of all the women who stood at the Fish market to sell... Well, can you guess what?



CAN YOU SOLVE THE RIDDLE?

What are there three of in the Fredrik Church?

ANSWER:

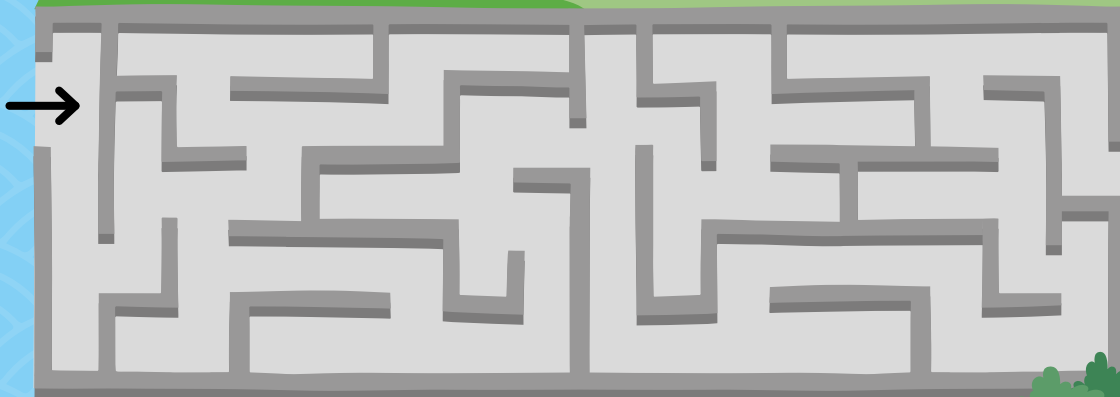
DID YOU KNOW THAT...



- Underneath Trossö there are secret military tunnels and rooms.
- In total 5 000 square metres, almost as large as three ice hockey rinks!
- The railway tunnel was finished in **1887**.
- Here there is for example a hospital.
- It was built during the 20th century from the **1920s-1940s**

FIND YOUR WAY OUT OF THE TUNNELS

Help Eli to find the way out of the tunnels underneath the city.



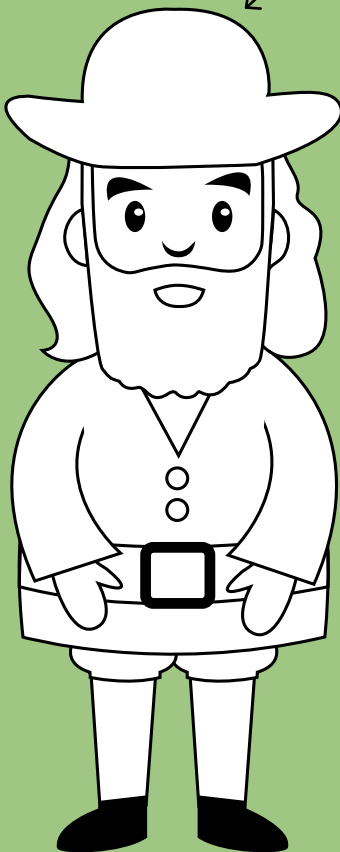
THE KING IN THE GREAT SQUARE

At the Great Square there is a statue of King XI. He founded Karlskrona in **1680**. In the stone he stands on lies a coffin. It is filled with books, magazines, coins and calendars from the year **1897** when the statue was placed there. A time capsule that is over 120 years old. Cool, isn't it?



COLOUR ROSENBOM

Rosenbom would like to have some new, fun clothes.



THE ADMIRALTY CHURCH

This church was inaugurated in **1685** and would later be replaced by a stone church. But the money ran out and the wooden church remained. Since the end of the **18th century** there has been a statue of the old man Rosenbom outside the church. Put a coin in his hat to donate to those in need!



HELLO! I AM THE OLD MAN ROSENBOM AND ELI'S TRAVEL FRIEND.

FIND FIVE ERRORS!

The picture to the right is not correct. Can you find the five errors?



TROSSÖ

CAN YOU GUESS
WHAT "THE
PILLEMASARE"
WANTS TO SAY?

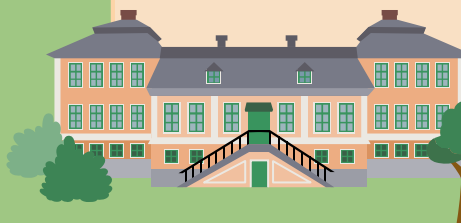
Move around
the letters in the
underlined words
to find out.

WE OFTEN CARRIED HEAVY
PLANKS OF QWOD ON OUR
SDHOURLES. THEN YOU HAD TO
EAT A PROPER AND HARDY
BEKRASFAT TO BE ABLE TO COPE.



BLEKINGE MUSEUM

Join us on voyages of discovery at the museum! Look at the world heritage exhibition and learn more about the eventful history of Blekinge. At Rosenholm, the museum also has a storehouse filled with things. There are 60 000 different objects!



BJÖRKHOLMEN



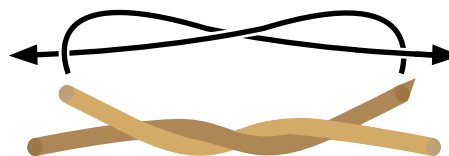
The small wooden houses at Björkholmen are cute, don't you think? Many of them were built in the **18th century**. They were accommodation for the workers at the dockyard. The men were called "pillemasare" in Swedish and spoke a dialect called "Björkholmska."



THE ROPE-WALK



The rope-walk is the longest wooden house in Sweden – 300 metres! It was built in the **1690s** and is one of Karlskrona's oldest buildings. Long ropes were made for the large ships here. How many steps do you need to go from one end of the house to the other?



1.



2.

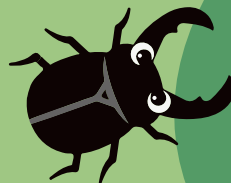


3.

THIS IS HOW YOU
MAKE A REEF KNOT



WÄMÖ

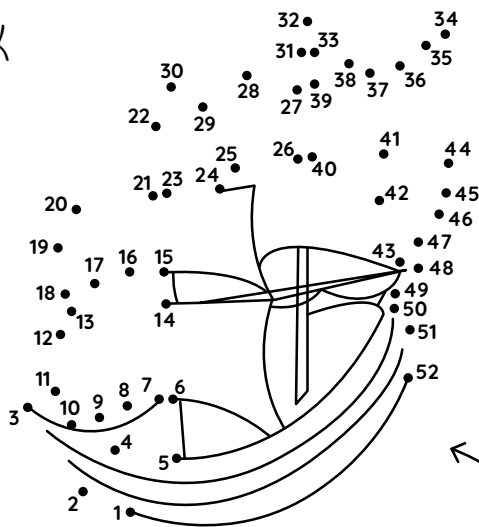


DID YOU KNOW THAT...

- The province of Blekinge's tree is an oak.
- Oaks can be almost a thousand years old.
- The province of Blekinge's animal is a stag beetle.
- The male stag beetle has large jaws and can be 8,5 cm long.

THE WÄMÖ PARK

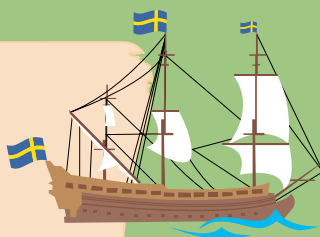
In the Wämö Park you can meet hens, chickens, pigs, goats, ducks and rabbits. You can also look at old houses here and play in the nice playground.



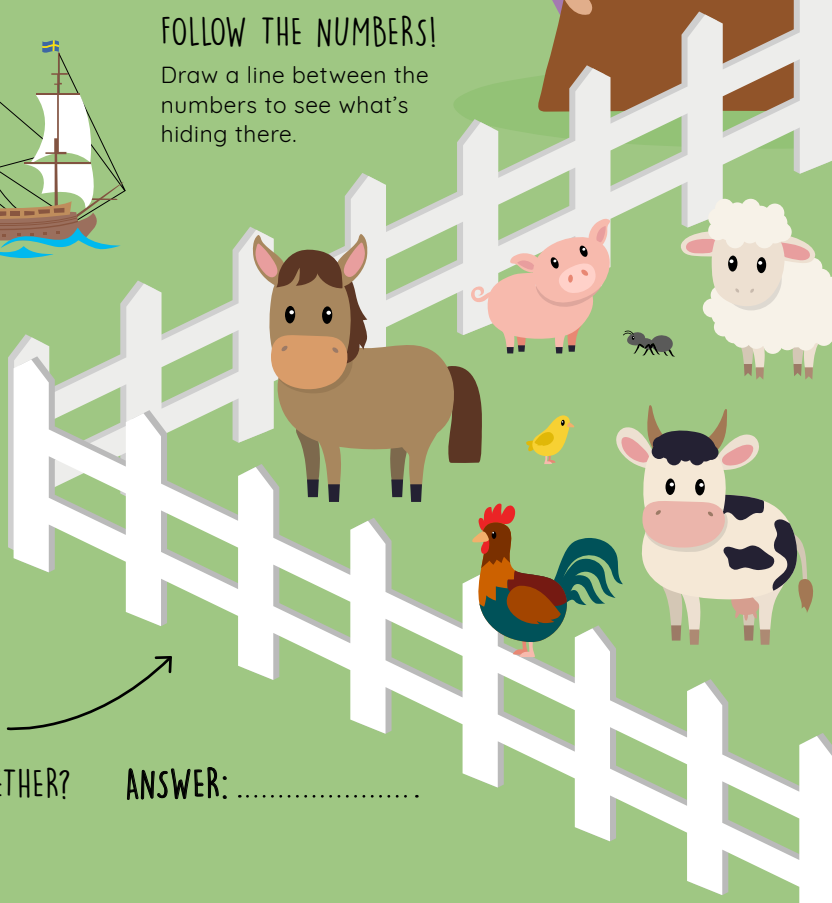
FOLLOW THE NUMBERS!

Draw a line between the numbers to see what's hiding there.

KARLSKRONA'S FIRST SHIP



It may seem strange when standing on dry land, but here in Wämö, Karlskrona's first shipyard was built in **1680**. Two years later the first ships could set sail on the sea. A new shipyard was built in **1684** at Lindholmen. It is still used to-day and is located behind the shipyard wall.



CAN YOU COUNT HOW MANY LEGS THE ANIMALS IN THE MEADOW HAVE ALL TOGETHER? ANSWER:

STUMHOLMEN

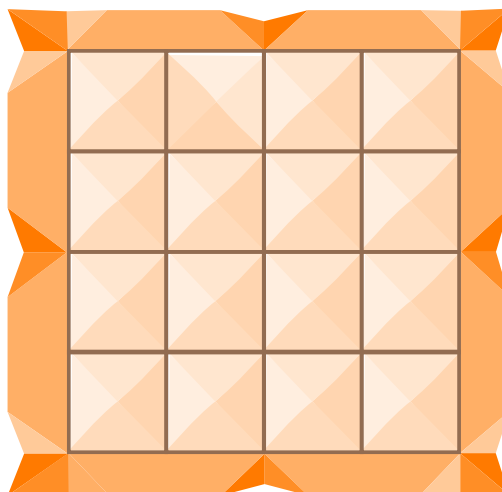
PLAY FOUR IN A ROW ON
THE ROOF OF THE SHED!

THE SLOOP AND LONGBOAT SHED



This is one of Karlskrona's weirdest buildings. It was built in **1786**. The Navy stored their smaller boats here during the winter. The roof has a special shape including 16 gaps which were used to collect rainwater.

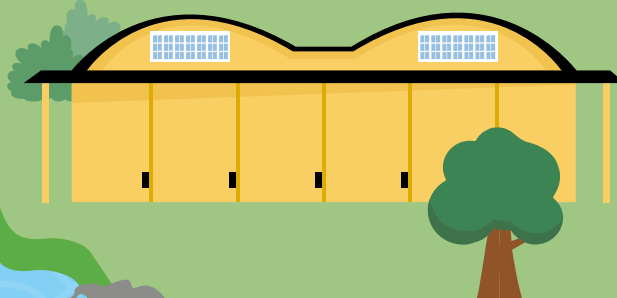
For 300 years Stumholmen was a military area. There were for example bakeries, butchers' shops and a factory manufacturing clothes for the military – as a little town of its own.



THE LARGE AND SMALL HANGAR



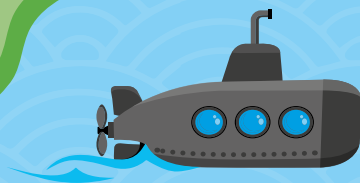
This is what houses for aero-planes look like! In the large yellow buildings the Marine Aviation Corps kept their seaplanes. They were of the model S5 Hansa and could land on water. The hangars were built in the end of the **1920s** and were used up until **1949**.



THE NAVAL MUSEUM



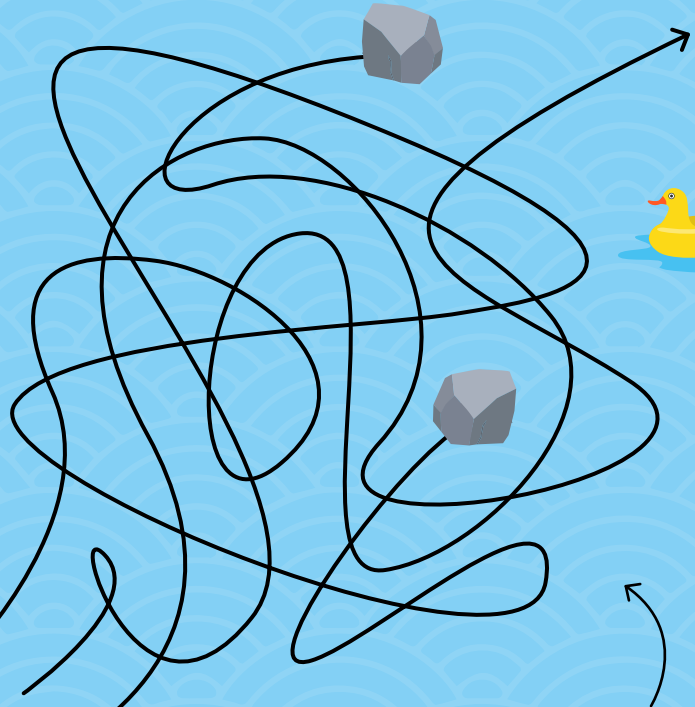
Do you want to know more about how seamen lived in the past? At the Naval Museum you can experience the exciting history of the Swedish Navy, from **1522** to the present day. You can enter the submarine Neptun, look at the large figureheads and see a real shipwreck in the wreck tunnel.



A

B

C



HELP SUBMARINE 137 FIND ITS WAY OUT OF THE ARCHIPELAGO!

ANSWER:



DID YOU KNOW THAT...

- A Russian submarine ran aground outside Karlskrona on October 27th **1981**.
- The submarine was called U137.
- At the Naval Museum you can see the submarine Neptun that was there when it happened.



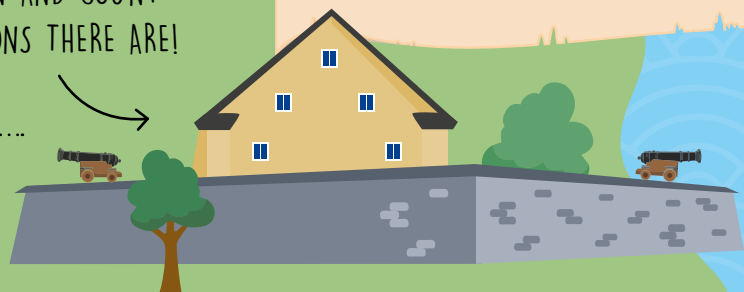
VISIT THE BASTION AND COUNT HOW MANY CANNONS THERE ARE!

ANSWER:

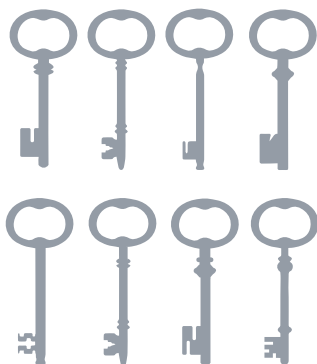
THE KUNGSHALL BASTION



The bastion was built up in the end of the **1680s** and was used for a 100 years. A storage with large food stocks was built in **1787-92**. The seamen couldn't bring fresh food on their long journeys, instead they ate salt herring, salt meat, grain and pea soup – every day.

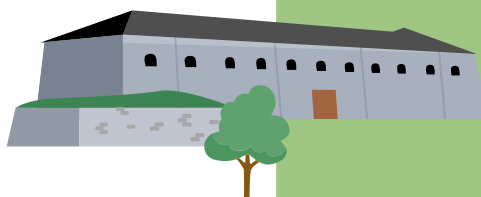


ASPÖ



THE DROTTNINGSKÄR CITADEL

The most peaceful citadel in Karlskrona! The citadel was built during the **17th century** to defend the harbor. It was used for 200 years but no shots were ever fired at enemies.



FIND THE RIGHT KEY TO THE CITADEL'S DUNGEON

THE KUNGSHOLMEN FORTRESS

On an island opposite the Drottningstårn citadel is the Kungsholmen fortress. It was built during the **17th century** and is still used by the military. If you shot cannonballs from both fortifications, they would meet in the middle of the sea!



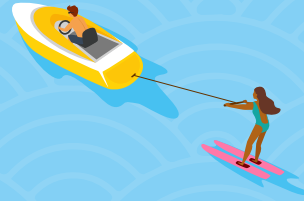
WHAT ARE YOU NOT ALLOWED TO THROW IN THE SEA?

Circle the things that are not allowed to be in the water.

There are more than 150 million tonnes of plastic in our oceans. The plastic both injures animals and is harmful for the environment. Therefore you should never throw anything in the sea that does not come from the sea in the first place.



TJURKÖ OCH STURKÖ



GUESS THE TOOLS!

1. Rearrange the letters to reveal the names of the tools
2. The stonecutters used two of the tools, make a circle around them.

ASW

MAHMER

LIRSEP

ESLICH



WRITE YOUR NAME IN
RUNIC WRITING!



THE STURKÖ MILL

The mill at Sturkö was built around the year **1900**. Many people had moved to the island to work as stonecutters and flour was needed so there was enough for everyone. There are also many nice places to go swimming at Sturkö. Maybe it is time for a dip?



THE RUNESTONE AT STURKÖ

What if stones could speak? At the time of the Vikings (from about the **9th-the mid 11th century**) people erected stones with runic writing that we can still read today.

ı B ı ı ı ı ı ı ı ı ı ı ı ı ı
A B C D E F G H I J K L M

ı ı B ı R ı ı ı ı ı ı ı ı ı ı ı
N O P Q R S T U V W X

ı ı ı ı ı ı ı ı ı ı ı ı ı
Y Z Ä Å Ö

TJURKÖ STONEMASONRY

During the second half of the **19th century** a lot of stone was needed for streets all over Europe. It was very heavy to carve stone, but even children had to work. Imagine how hard this was. Then it is much more fun to go to school!



MY
NAME:

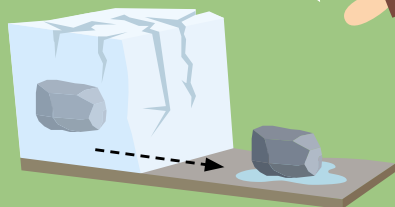
RÖDEBY



DID YOU KNOW THAT...

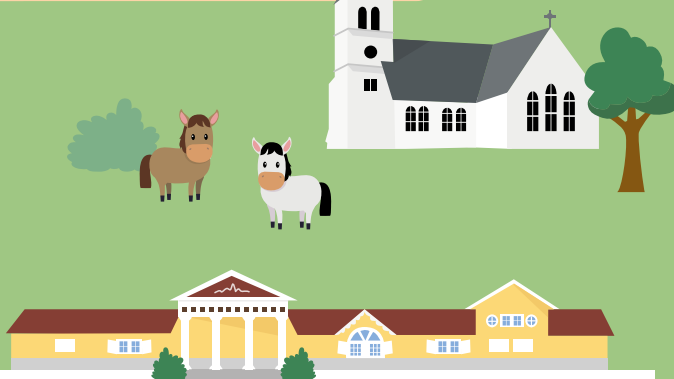
- During the ice age the whole of Sweden was covered in ice.
- In the ice there were big boulders that fell down on the ground as the ice melted.

(So there was no giant throwing stones at the church.)



THE GIANT'S CAVE

According to old tales there was a giant called Snopp. He lived in a cave outside Rödeby and hated when the church bells were ringing. The giant became so angry that he threw large boulders at the church, but missed. You can see Snopp's cave by road 28, just south of Rödeby.



SKÄRVA

CAN YOU SOLVE CHAPMAN'S TRICKY RIDDLE?

🥚 - LK + U • ★ - ST + E • W + 🧝 - F

+ 🐮 - W + ME • 🐸 - AD •

🕸️ - MUM • 🎪 - MID + 🏠

ANSWER:

SKÄRVA MANOR

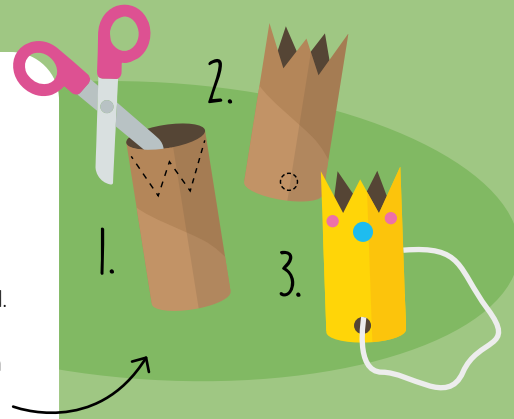
The shipyard admiral Fredric Henric af Chapman built the manor in **1785-86** and had it as his summer house. There is also a small temple, a gothic tower and a walled crypt here. Chapman was never buried there, but you can go there to have a look - if you dare...



LYCKEBY

A CROWN MADE OF A TOILET PAPER ROLL

1. Cut zigzag-patterns in one end of the roll.
2. Make two small holes in the other end.
3. Paint and decorate the crown. Thread a string or a piece of elastic through the holes and tie the ends.



LYCKÅ CASTLE RUIN

The Danish king Kristian III had Lyckå castle built in **1545** as protection if the farmers would revolt. The castle was torn down around **1600**, when the new town Kristianopol was built. How do you think it was to live in the castle?



THE CROWN MILL



It wasn't easy to get hold of flour in Karlskrona in the old days. Therefore, the Crown Mill was built during **1710-1721** by the Lyckeby creek. To be able to operate the mill one also built the waterfall you can see in Lyckeby.



VOTING RIGHTS FOR WOMEN!



WOMEN'S RIGHTS

One of many brave women from the past was Emelie Rathou, who was born in **1862** in Lösen outside Karlskrona. She was a politician, ran her own newspaper and fought for the right for women to vote. It is thanks to her, and many others, that women in Sweden finally got the right to vote in **1921**.

W	A	F	R	E	G	H	P	J	L
O	L	Ö	S	E	N	O	M	Q	U
M	N	Ä	S	X	A	I	L	C	A
E	N	E	W	S	P	A	P	E	R
N	S	V	Ä	W	K	O	U	K	Y
I	E	O	A	E	M	I	L	I	E
R	A	T	H	O	U	F	T	S	K
D	T	E	A	I	L	S	A	P	H
K	A	R	L	S	K	R	O	N	A

FIND THE WORDS!

Seven words from the text about Emelie are hiding here! Search both across ► and down ▼

KRISTIANOPEL



FUN WITH CANNONS

Around Kristianopel there was a 2 500 metres long wall. In **1669** there were as many as 69 cannons on the wall. Some of them are still there in the harbour of Kristianopel. You can climb up on them and sit. Don't forget to shout BOOM!



ANTLIONS



Do you want to see what antlions look like? In Högasand north of Kristianopel there are many of them hiding in the sand! The antlions dig pits to trap passing ants where they lie waiting for an ant to fall down... Yum!



HOW MANY ANTLIONS ARE HIDING ON THIS PAGE?

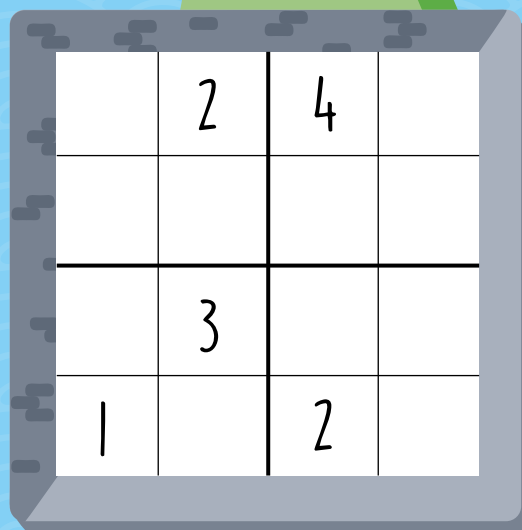
ANSWER:



SOLVE THE SUDOKU IN THE WALL

THE WAR BETWEEN SWEDES AND DANES

The city was built on the command of the Danish king Kristian IV in **1599**. As a protection against the Swedes a wall six metres in height was erected. Kristianopel became Swedish later in connection with the Roskilde peace in **1658**. Today you can walk on parts of the wall, but please hold hands with an adult.



Fill in all the squares with 1 to 4. Each number can only be used once in each line across and down, as well as in each square (2x2 squares).

THE KARLSKRONA—CROSSWORD

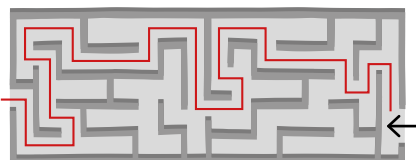
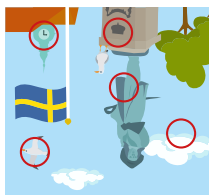
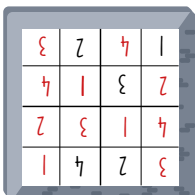
There is so much fun to discover in Karlskrona!
Can you solve the tricky crossword puzzle?
If you total the letters in the coloured squares
you will get the secret message!



ANSWER:



ANSWERS



p.4 - Riddle: The letter R
p.6 - "The pillamasare": wood, shoulders, breakfast
p.7 - Animals in the meadow: 26 legs
p.9 - The submarine's route: C
p.9 - Number of cannons: 16
p.10 - The right key: 2nd row, 3rd key
p.10 - Rubbish in the water: Everything except the bones of the fish shall be circled
p.11 - Tools: Saw, Hammer, Pliers, Chisel
p.12 - Riddle: You are welcome to my summer house
p.13 - Find words: Across: Lösen, newspaper, Emilie, Rathou, Karlskrona. Down: vote, women
p.14 - Antlions: 9
p.15 - The Karlskrona-crossword: You are cool



COME WITH ELI ON AN ADVENTURE IN KARLSKRONA!

Experience a historical journey and heading adventure along with Eli and the old man Rosenbom. Solve tricky puzzles and learn more about Karlskrona's exciting places and interesting characters. Maybe you will find new favorite spots and create memories that can turn into stories about your own life!

Eli's Adventures in Karlskrona is produced by the project "Development plan for places to visit in the Naval port of Karlskrona" that is run by the Municipality of Karlskrona and the National Property Board Sweden (SFV) in cooperation with:



The contents of this Art and Crafts Book are the sole responsibility of the author[s] and can in no way be taken to reflect the views of the European Union, the Managing Authority or the Joint Secretariat of the South Baltic Cross-border Cooperation Programme 2014-2020.

You can find more information about destinations in Karlskrona on www.visitkarlskrona.se. Please remember to recycle this puzzle book. Thank you!